

COLUMBUS REGIONAL AIRPORT AUTHORITY
PORT COLUMBUS • RICKENBACKER • BOLTON
2005 1st Quarter Air Traffic Summary



Columbus Regional Airport Authority

David Whitaker, V.P.
Business Development & Communications
(614) 239-5028

4600 International Gateway
Columbus, Ohio 43219
Columbusairports.com

CMH 2005 1st Quarter

Passengers	1Q	YTD	YTD 05 vs. 04
<i>Scheduled Service</i>			
Enplaned	756,422	756,422	10.8%
Deplaned	<u>740,581</u>	<u>740,581</u>	<u>8.8%</u>
Schedule Total	1,497,003	1,497,003	9.8%
<i>Charter Service</i>			
Enplaned	2,489	2,489	-28.3%
Deplaned	<u>3,026</u>	<u>3,026</u>	<u>-32.6%</u>
Charter Total	5,515	5,515	-30.7%
Grand Total	1,502,518	1,502,518	9.6%

Operations	1Q	YTD	05 vs. 04
Air Carrier	12,398	12,398	31.2%
Air Taxi	29,552	29,552	-2.1%
Civilian Itinerant	13,251	13,251	-12.8%
Military Itinerant	140	140	-79.7%
Civilian Local	740	740	-23.8%
<u>Military Local</u>	<u>0</u>	<u>0</u>	<u>-100.0%</u>
Total	56,081	56,081	-0.7%
Bolton Field <small>(CMH reliever)</small>	10,857	10,857	-33.5%

Cargo	1Q	YTD	YTD 05 vs. 04
Enplaned	502,694	502,694	4.0%
Deplaned	<u>1,278,863</u>	<u>1,278,863</u>	<u>-12.4%</u>
Total	1,781,557	1,781,557	-9.3%

Mail	1Q	YTD	05 vs. 04
Enplaned	2,141,009	2,141,009	-11.0%
Deplaned	<u>1,321,205</u>	<u>1,321,205</u>	<u>18.2%</u>
Total	3,462,214	3,462,214	-1.7%

Airline Passengers	1Q	1Q 2005 vs. 1Q 2004
Air Canada - Jazz	8,291	-11.9%
America West	75,190	-8.1%
American	202,687	13.1%
Continental	95,658	-2.7%
Delta	330,444	7.6%
Independence Air	20,633	n/a
Continued	next	column →

Airline Passengers	1Q	1Q 2005 vs. 1Q 2004
Midwest Connect	9,034	11.9%
Northwest	141,472	0.4%
Southwest	263,552	18.0%
United	152,789	-7.2%
USA 3000	0	-100.0%
<u>US Airways</u>	<u>197,253</u>	<u>34.6%</u>
Total	1,497,003	9.8%

Service Changes - 1st Quarter

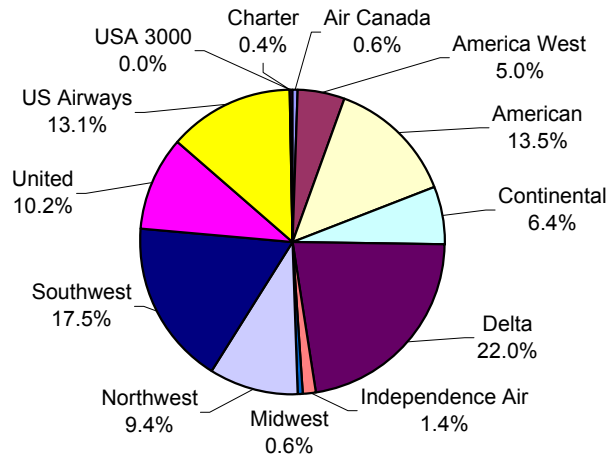
US Airways significantly increased capacity replacing RJs with mainline equipment to DCA and their hubs. Southwest added an additional MDW flight making 7 daily trips.

Traffic Analysis

More capacity was added to 1Q 2005 in addition to new service by Independence Air helping boost Port Columbus to its 4th consecutive quarter of growth.

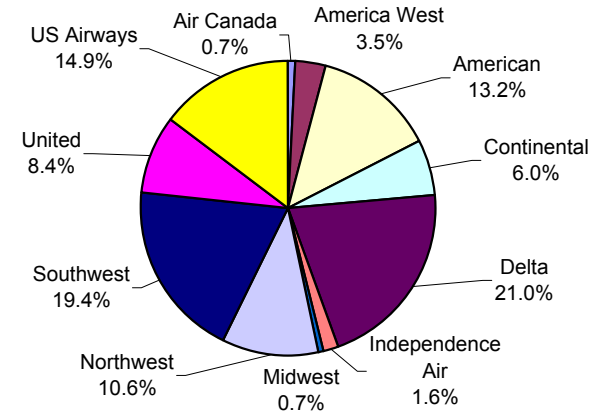
CMH Market Share by Passengers

1st Qtr 2005 Market Share by Total Passengers



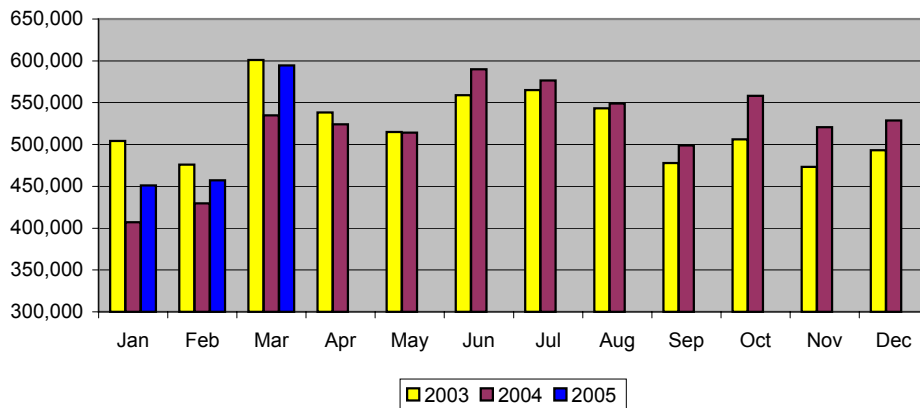
1. Delta Air Lines 2. Southwest Airlines 3. American

1st Qtr 2005 Market Share by Total Seats

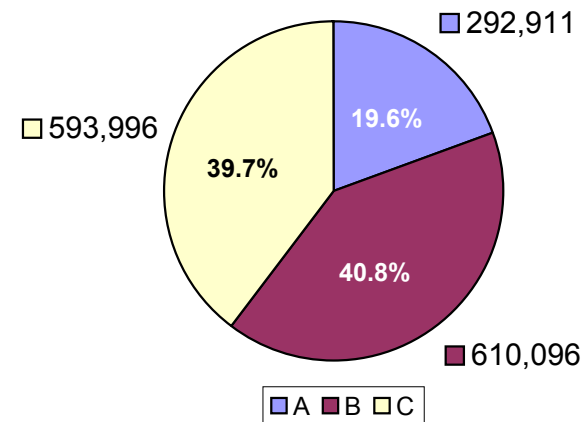


1. Delta Air Lines 2. Southwest Airlines 3. US Airways

Three Year Monthly Total Passenger Trend

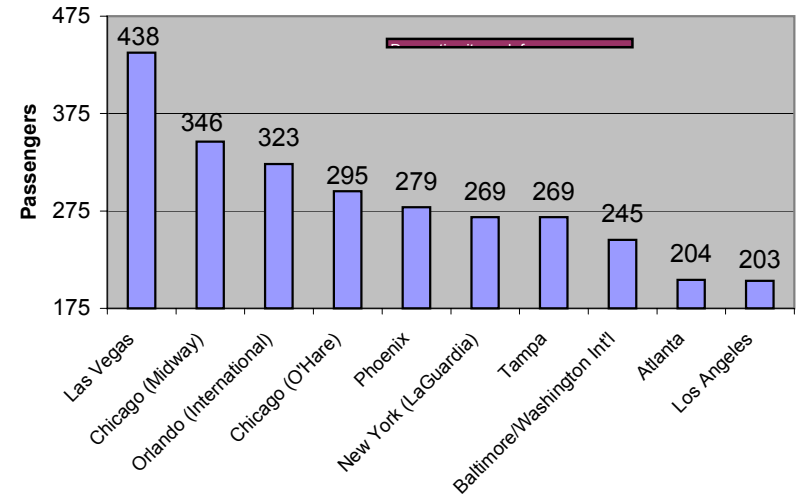


1st Quarter - Concourse A, B and C Passenger Traffic



CMH Scheduled Service

Scheduled Non-Stop Service from Columbus, Ohio as of 03/31/05



Source: US DOT

Airport	Carrier	Daily Departures	Airport	Carrier	Average Daily Departures
Atlanta	Delta (DL)	5	Miami	AA	1 (Sat/Sun only)
Baltimore	Southwest (WN)	5	Milwaukee	Midwest Connect (YX)	4
Bluefield	US Airways (US)	1	Minneapolis	NW	4
Boston	American Airlines (AA)/ DL	7	Nashville	WN	2
Cancun	USA 3000	0	New York (EWR)	CO	5
Charlotte	US	7	New York (JFK)	DL	1
Chicago (MDW)	WN	7	New York (LGA)	AA/DL/US	13
Chicago (ORD)	AA/United Airlines (UA)	16	Orlando	DL/WN	6
Cincinnati	DL	9	Philadelphia	US	5
Cleveland	Continental (CO)	4	Phoenix	HP/WN	3
Dallas (DFW)	AA	7	Pittsburgh	US	4
Denver	UA	2	Raleigh/Durham	AA	4
Detroit	Northwest Airlines (NW)	8	St. Louis	AA/WN	4
Fort Lauderdale	DL	2	Tampa	DL/WN	5
Fort Myers	DL	2	Toronto	Air Canada Jazz (AC)	3
Hartford	DL	3	Washington (DCA)	US/DL	7
Houston	CO	4	Washington (IAD)	UA/Independence Air	8
Las Vegas	America West (HP)/WN	4			
Memphis	NW	3			
			35 Airports Non-Stop	11 Airlines	174

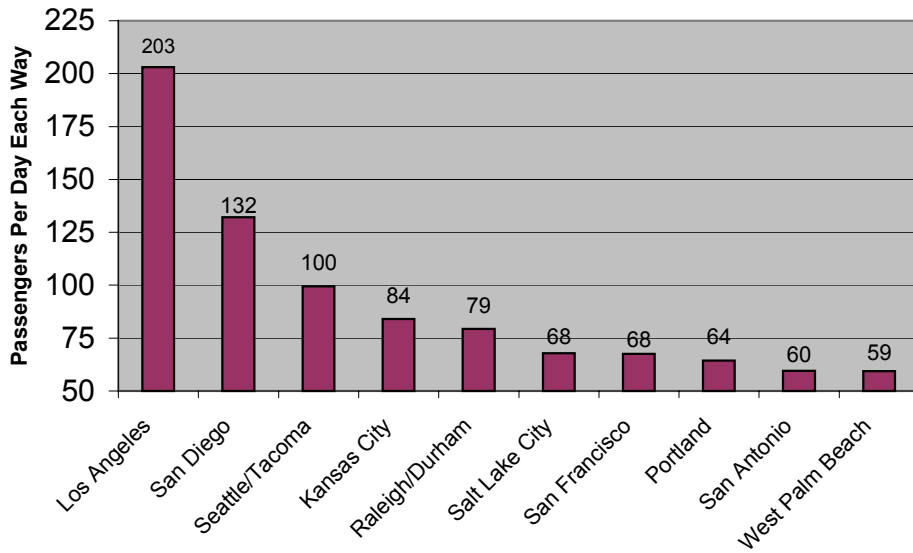
as of 03/31/05



CMH Extra Statistics

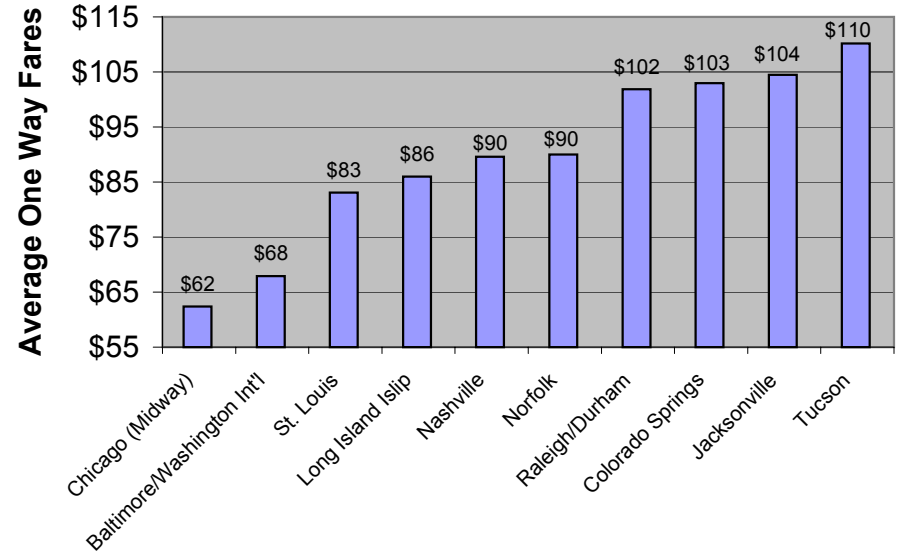


Ten Largest Markets Without Non-Stop Service as of 12/31/04



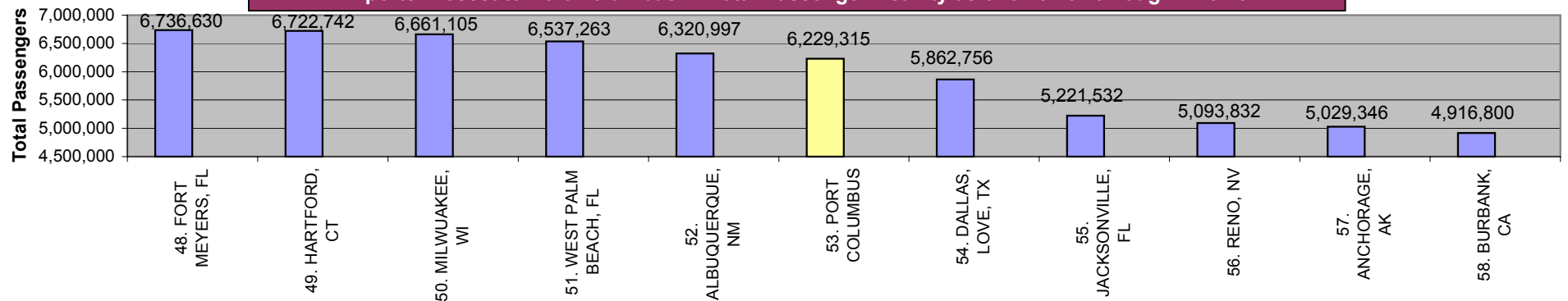
Source: US DOT

Top Ten Lowest Fare Cities from Columbus as of 12/31/04



Source: US DOT

Airports Closest to Port Columbus in Total Passenger Activity as of 01/01/04 through 12/31/04

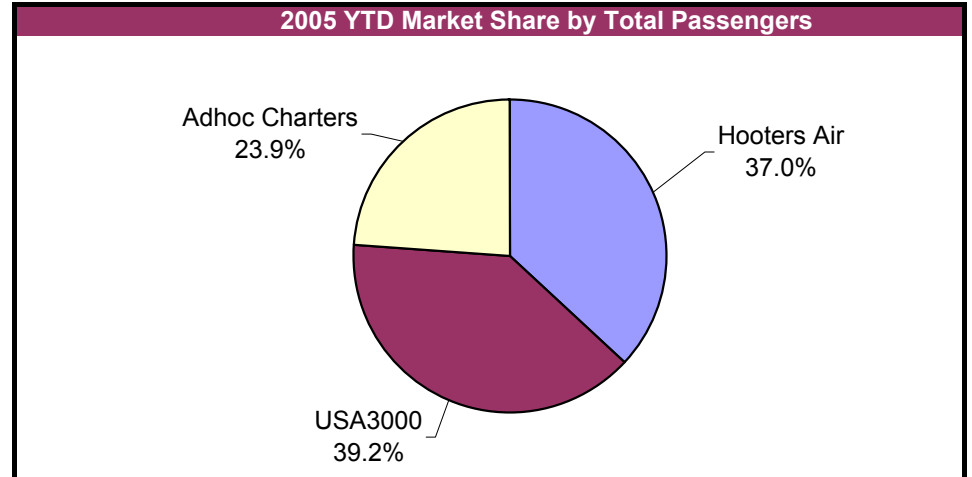


Source: ACI

Rickenbacker Statistic Summary

Charter Passengers	1Q	YTD	YTD 05 vs. 04
Enplaned	4,555	4,555	-75%
Deplaned	<u>4,446</u>	<u>4,446</u>	<u>-75%</u>
Schedule Total	9,001	9,001	-75%

Air Carriers	1Q	YTD	YTD 05 vs. 04
Hooters Air	3,326	3,326	-36%
USA3000	3,524	3,524	100%
Adhoc Charters	2,151	2,151	340%
Casino Express/Funjet	0	0	-100%
Southeast Airlines	0	0	-100%
Laker Airways	<u>0</u>	<u>0</u>	<u>0%</u>
Total	9,001	9,001	-75%



Cargo	1Q	YTD	YTD 05 vs. 04
Enplaned	27,018,565	27,018,565	-2.6%
Deplaned	<u>19,220,320</u>	<u>19,220,320</u>	<u>-10.1%</u>
Total	46,238,885	46,238,885	-5.85%

Cargo Carriers	1Q	YTD	YTD 05 vs. 04
FedEx:	34,910,109	34,910,109	-16.5%
UPS:	6,174,491	6,174,491	-0.8%
Polar Air Cargo:	0	0	-100.0%
Atlas Air	164,966	164,966	100.0%
Others	<u>4,989,319</u>	<u>4,989,319</u>	<u>998.6%</u>
Total	46,238,885	46,238,885	-5.85%

